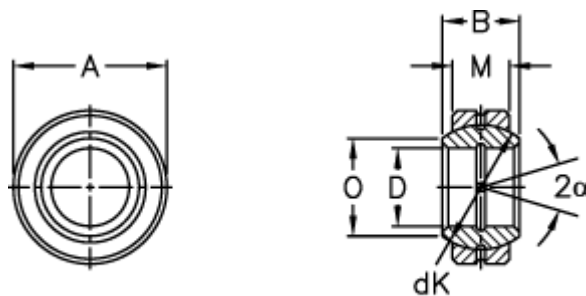


Article number: 03500016

Description: Fluro Rod end GE 16E

Measures



Str. 6-12 uden smørerille

A	= 30 0 -0,009	Tilt angle = 10
B	= 14	Weight = 43
D	= 16 0 -0,008	
dK	= 25	
Dynamic load C (kN)	= 21.2	
M	= 10	
O	= 20.7	
Static load C0 (kN)	= 106	